

WARUM UNS
KÜNSTLICHE INTELLIGENZ
NICHT KALT LÄSST

F*CK YOU AI (I LOVE YOU)

VORTRÄGE * WORKSHOPS * DISKUSSIONEN

EVENTSERIE APRIL - JUNI 2024 

04.24 05.24 06.24 *

CODE30
YEARS

**F*CK
YOU AI**
(I LOVE YOU)

KI: EIN BLICK ÜBER DEN ChatGPTellerrand

Mit Markus Egger

4. Juni 2024 - Kunsthaus Nexus Saalfelden

Sogga?



- **Markus Egger**
- President and Chief Software Architect CODE Group
- Verleger – CODE Magazine
- Internationaler Autor and Vortragender
- Microsoft RD (Regional Director)
- Microsoft MVP 1995-2019
- Email: markus@codemag.com
- Twitter: @markusegger





30 years of
"Helping People Build Better Software"

AI Consulting Services



Check out our new Executive Briefing offer!

We can help with your AI needs

What does AI mean for you?

“Skunk Works” Projects

codemag.com/AI

codemag.com/ExecutiveBriefing



Agenda



- Was ist eigentlich KI/AI? Geschichte?
- Warum gerade jetzt?
- Wie KI/AI aktuell unser Leben verändert
- Wie KI/AI die Wirtschaft verändert
- KI/AI in der Praxis

AI Overview



Was ist eigentlich KI?

- KI ist wenn eine Maschine “intelligente” Dinge macht
 - Aber was ist “intelligent” in diesem Sinne?
 - Was ist “intelligent” ganz generell?
-
- “KI” war bisher immer das,
das Computer noch nicht konnten



Beispiele von “intelligenten” Programmen

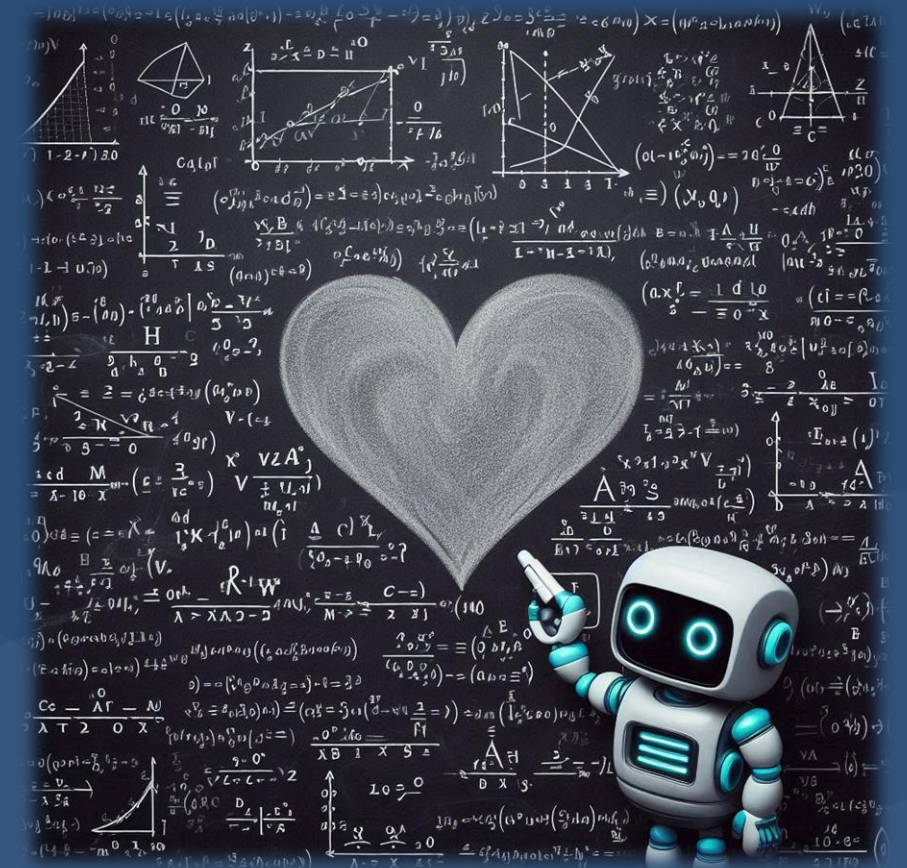
- Daten suchen
- Schach oder GO spielen
- Benutzereingaben vorhersagen
- Filme empfehlen
- Den Aktienmarkt vorhersagen
- Bild- und Spracherkennung
- Maschinelle Übersetzungen
- Verträge erstellen



OK. Aber was *ist* KI?!?



Künstliche Intelligenz besteht aus mathematischen Modellen die Datenmuster beschreiben



Warum Jetzt?!?

- Künstliche Intelligenz ist nicht neu!
- Aber: Rechenleistung und Datenmengen waren begrenzt



Dartmouth Workshop, 1956

“Superhuman Intelligence”

- Was bedeutet es “intelligenter als Menschen” zu sein?
 - Schneller?
 - Mehr Erinnerungsvermögen?
 - Mehr Faktoren einbeziehen?
 - Komplexer?
 - Genauer?
 - Weniger Fehler?
 - Bessere Mustererkennung?
 - ...
- *Anmerkung: Aktuell fehlt uns das Vokabular, um über das Thema überhaupt effizient zu sprechen*



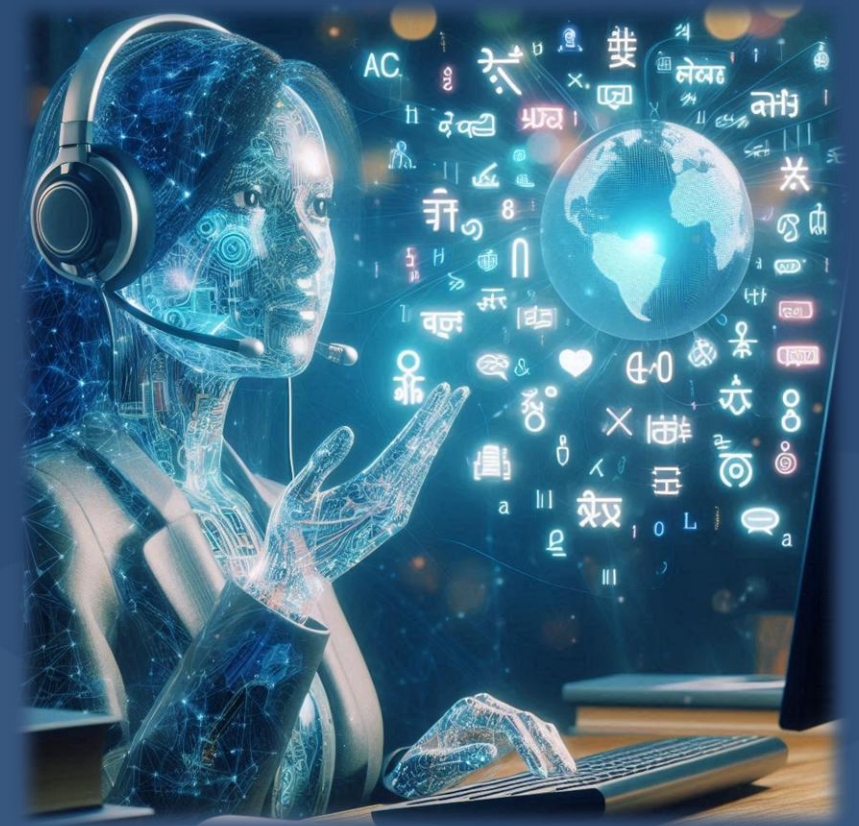
State of the Art



- Narrow Learning (Deep und Shallow)
- Keine wirkliche „General Artificial Intelligence“
 - Auch wenn der Ausdruck „GAI“ (oder „AGI“) oft zu Werbezwecken verwendet wird
 - AGI ist meiner Meinung nach auch nicht wirtschaftlich wichtig
- Aber: Die aktuellen Möglichkeiten mit KI sind bereits unglaublich erstaunlich!
- Das Entwicklungstempo ist ungeheuer hoch!

Sprachmodelle

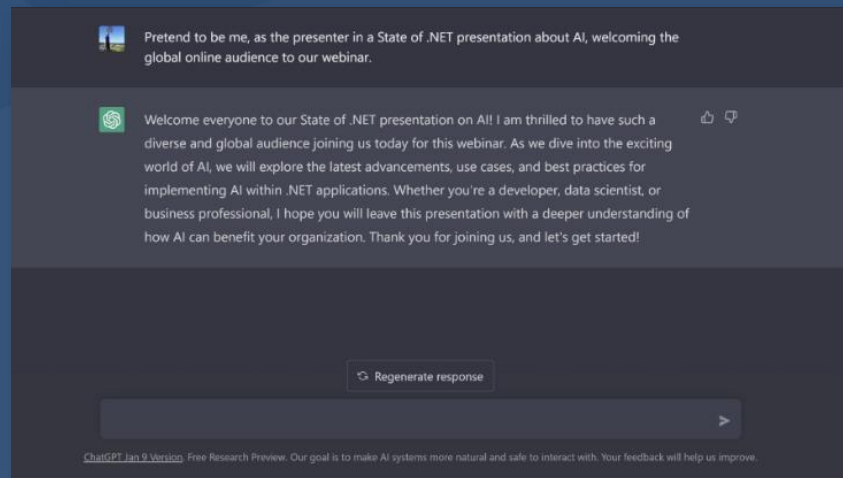
- Eine spezielle Art der KI
- “ChatGPT”
- “Large Language Models” (LLMs)



OpenAI ChatGPT



- *GPT = Generative Pre-Trained Transformer
- Bedeutet: Eigentlich „nur“ ein „Textrechner“
 - Aber ein sehr Guter 😊
- Microsoft gehört die Hälfte von OpenAI



AI Adoption – 1 Million User



- Netflix: 41 Monate
- Facebook: 10 Monate
- Instagram: 2½ Monate
- **ChatGPT: 5 Tage!**

ChatGPT is not “One Thing”



- ChatGPT ist eine Ansammlung verschiedener Modelle
- GPT 3.5 ist am weitesten verbreitet
- GPT4 wächst sehr schnell
- GPT4o – das neueste OpenAI GPT Modell
- Codex für Source Code
- ...

Was macht GPT so besonders?



We have two boxes. John puts a ball into the first box. He then leaves. Bob enters the room and moves the ball from the first to the second box. John returns that evening. Where is he looking for the ball?

GPT-4o



- “o” für “omni-modal”
- Dieses Modell unterstützt verschiedene Eingabemethoden
 - Text, Sprache, Bilder, Video
- Beispiele:
 - <https://www.youtube.com/watch?v=c2DFg53Zhvw>
 - <https://www.youtube.com/watch?v=RI-BxtCx32s>

ChatGPT – Technologiedemo?



- Das Wichtigste an ChatGPT sind die verwendeten Modelle
- Diese Modelle können auf verschiedenste Art in Software eingebaut werden

A futuristic hospital room with a monochromatic blue color scheme. In the center, a glowing blue energy vortex or DNA helix structure rises from a circular platform on the floor. The room contains several hospital beds, each with a monitor displaying vital signs. In the foreground, a large medical control panel is visible, featuring a heart icon, a stethoscope, and various diagnostic screens showing ECGs and anatomical diagrams. To the right of the panel are two blue medicine bottles. The overall atmosphere is high-tech and futuristic.

Imagine...



- Copilot ist Microsofts KI „Marke“
- Alle Microsoft Applikationen haben einen Copilot (oder werden bald einen haben)
- Der Ausdruck „Copilot“ wird auch generell als Interaktionsmodell für KI verwendet

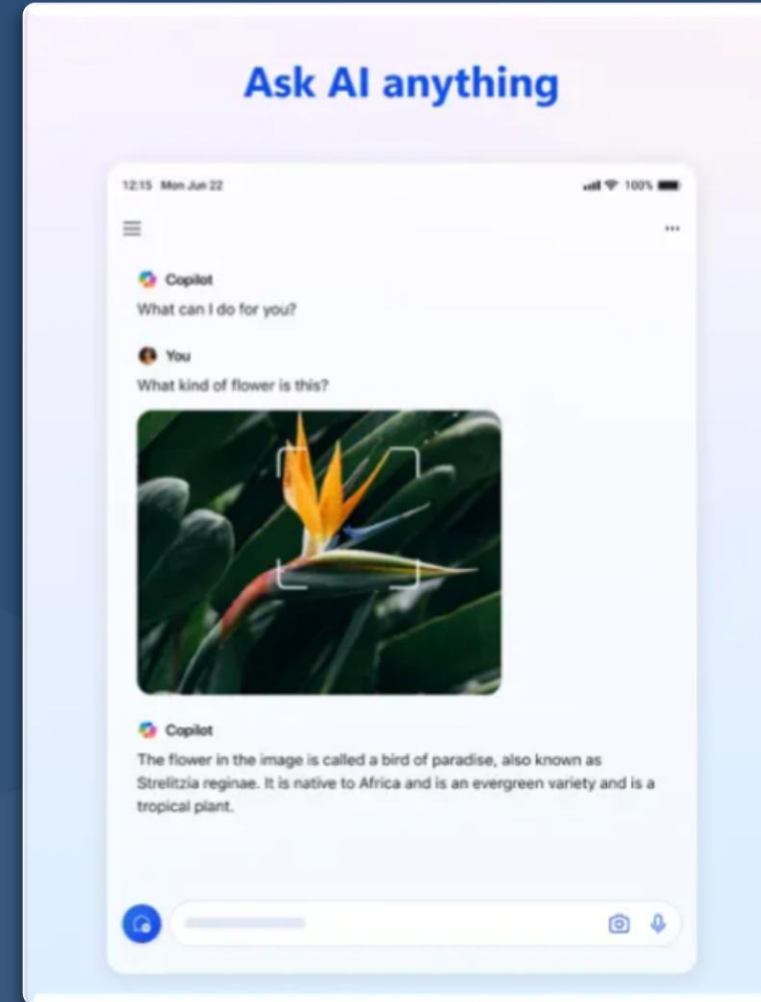
Microsoft Copilot für...



- Service
- Sales
- Azure
- Finance
- Security
- Teams
- Microsoft 365
- Bing
- Edge
- Windows
- Team
- ...

Copilot App

- Eigenständige Applikation in Windows und auf Mobilgeräten
- Moderne PCs haben eine „Copilot Taste“ auf der Tastatur



Copilot in anderen Apps



- Je spezifischer die Applikation, umso besser funktioniert ein Copilot

AI-Powered Knowledge-Base



Welcome to the CODE Ohana!

I'm sorry to hear that you're being bullied at work. Workplace bullying is a serious issue, and we want to help you understand your options and take action.

1. Familiarize yourself with your company's policy on workplace bullying. It's important to understand the company's stance on workplace bullying. It's important to understand the company's stance on workplace bullying.
2. Document the incidents: Keep a record of each bullying incident, including the date, time, location, and details of what happened. If possible, get witnesses who may have seen or heard the incident. This documentation is crucial for any future action.
3. Talk to a trusted colleague or supervisor: If you feel comfortable, talk to a trusted colleague or supervisor for advice, or help in resolving the issue.
4. Report the bullying: If the bullying continues or if you feel unsafe, report the bullying to the HR department. Provide them with your documented incidents and ask for their support.
5. Cooperate with the investigation: If your company initiates an investigation, cooperate fully and provide all the information you can.
6. Seek support: Dealing with workplace bullying can be stressful, so seek support from friends, family, or a professional counselor.

Remember, each company may have its own policies and procedures, so it's important to consult with a member of management or HR to understand the specific steps you can take.

Document references:

[1-11 Workplace Bullying](#) [1-10 Workplace Violence](#)

Suggested Follow-Up Questions:

[What are some possible outcomes of reporting workplace bullying?](#)
[What resources are available for dealing with workplace bullying?](#)

Hello! I am CODE Copilot! Ask me anything...

Ich werde am Arbeitsplatz gemobbt. Was soll ich machen?

Es tut mir leid zu hören, dass Sie am Arbeitsplatz gemobbt werden. Mobbing ist inakzeptabel und verstößt gegen die Unternehmensrichtlinien. Hier sind einige Schritte, die Sie unternehmen können:

1. Notieren Sie alle Vorfälle: Machen Sie eine Liste aller Vorfälle von Mobbing, einschließlich Datum, Uhrzeit, Ort und Details darüber, was passiert ist.
2. Sprechen Sie mit einem Vorgesetzten oder der Personalabteilung: Teilen Sie Ihrem Vorgesetzten oder der Personalabteilung Ihre Bedenken mit und reichen Sie Ihre Dokumentation ein. Erklären Sie, wie Sie sich fühlen und bitten Sie um Unterstützung bei der Lösung des Problems.
3. Vertrauensperson oder Gewerkschaft einschalten: Wenn Sie sich bei Ihrem Vorgesetzten oder der Personalabteilung nicht wohl fühlen oder das Problem nicht gelöst wird, wenden Sie sich an eine Vertrauensperson oder Ihre Gewerkschaft, falls vorhanden.
4. Verwenden Sie die bereitgestellten Kanäle: Überprüfen Sie die Mitarbeiterhandbücher oder Unternehmensrichtlinien, um herauszufinden, welche Verfahren oder Kanäle für die Meldung von Mobbing vorgesehen sind und nutzen Sie diese.
5. Dokumentieren Sie weitere Vorfälle: Setzen Sie Ihre Dokumentation fort, um weitere Vorfälle festzuhalten.
6. Seek external support: If the internal procedures do not resolve the issue or if you experience any form of retaliation, you may want to seek external support from labor authorities or legal professionals.

It's important to remember that every situation is unique, so consider seeking additional guidance from a legal professional who specializes in workplace issues to ensure you are taking the appropriate actions to address the situation.

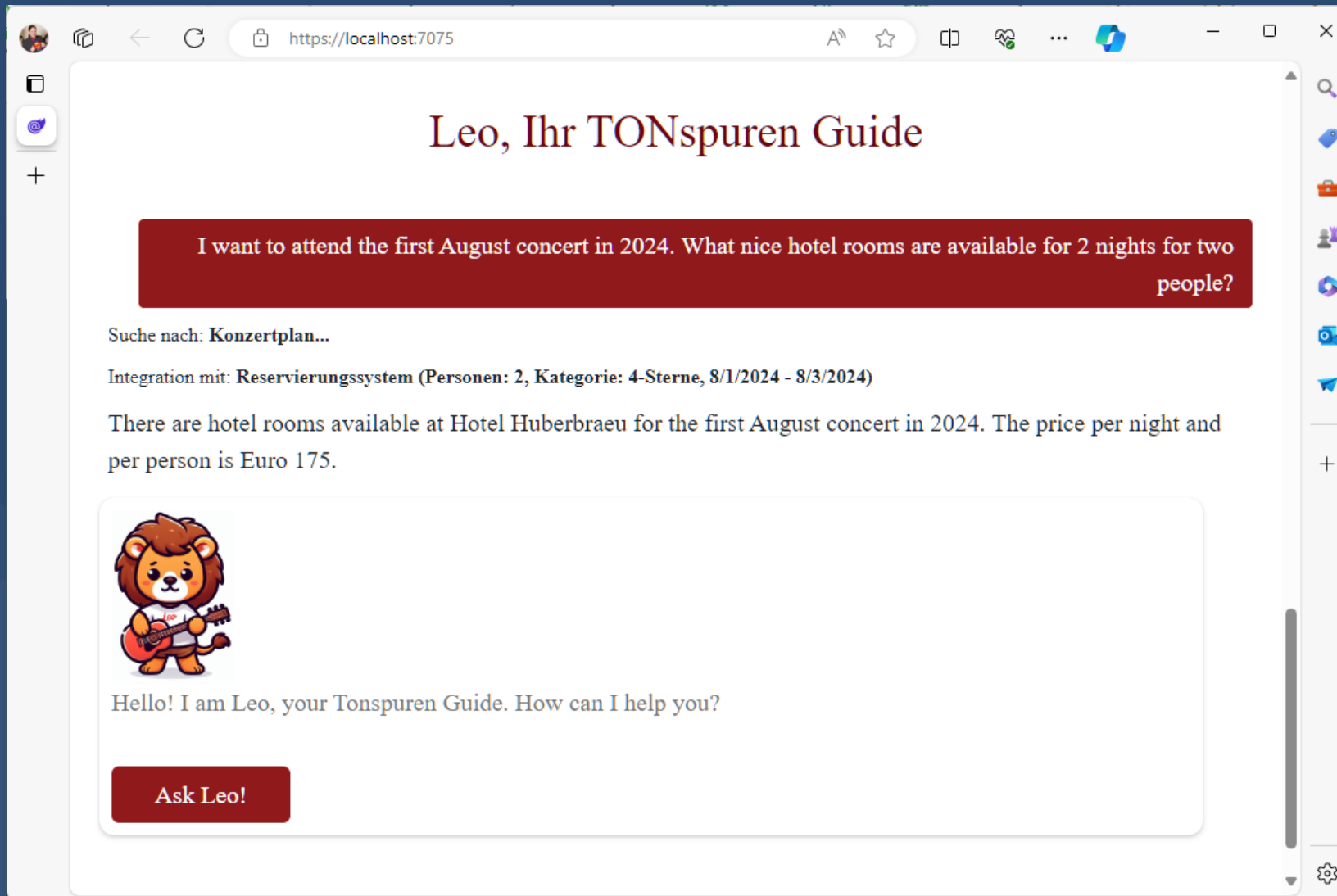
Document references:

[1-11 Workplace Bullying](#) [1-10 Workplace Violence](#)

Suggested Follow-Up Questions:

[Gibt es Gesetze in Deutschland, die den Schutz vor Mobbing am Arbeitsplatz regeln?](#) [Was sind die möglichen Konsequenzen für die Täter von Mobbing am Arbeitsplatz?](#)
[Welche Maßnahmen ergreift das Unternehmen, um Mobbing am Arbeitsplatz zu verhindern?](#)
[Wie kann ich meine emotionale Gesundheit während dieser schwierigen Situation schützen?](#) [Wie kann ich mich selbst verteidigen, wenn ich gemobbt werde?](#)

AI-Powered Web Sites



The screenshot shows a web browser window with the address bar displaying `https://localhost:7075`. The page title is "Leo, Ihr TONspuren Guide". A dark red input box contains the text: "I want to attend the first August concert in 2024. What nice hotel rooms are available for 2 nights for two people?". Below this, the search results are displayed: "Suche nach: Konzertplan..." and "Integration mit: Reservierungssystem (Personen: 2, Kategorie: 4-Sterne, 8/1/2024 - 8/3/2024)". The main text states: "There are hotel rooms available at Hotel Huberbraeu for the first August concert in 2024. The price per night and per person is Euro 175." A cartoon lion character, Leo, is shown playing a guitar. Below the character, the text reads: "Hello! I am Leo, your Tonspuren Guide. How can I help you?". A dark red button labeled "Ask Leo!" is positioned at the bottom of the chat area. The browser's sidebar on the left shows icons for home, back, forward, and a search icon. The right sidebar contains various utility icons like a magnifying glass, a blue diamond, a shopping cart, a person icon, a gear, a camera, a paper plane, and a plus sign. The bottom right corner of the browser window has a settings gear icon.


Leo, Ihr TONspuren Guide

I want to attend the first August concert in 2024. What nice hotel rooms are available for 2 nights for two people?

Suche nach: **Konzertplan...**

Integration mit: **Reservierungssystem** (Personen: 2, Kategorie: 4-Sterne, 8/1/2024 - 8/3/2024)

There are hotel rooms available at Hotel Huberbraeu for the first August concert in 2024. The price per night and per person is Euro 175.



Hello! I am Leo, your Tonspuren Guide. How can I help you?

Ask Leo!

Accessibility



A screenshot of a web browser displaying a webpage for 'CODE TRAINING'. The browser's address bar shows 'https://codemag.com/event/NEXUS24'. The webpage has a pink header with the 'CODE TRAINING' logo and navigation links for 'Home' and 'Magazine'. The main content area features a large image with the text 'F*CK YOU AI (I LOVE YOU)' and a headline 'KI: EIN BLICK ÜBER DEN ChatGPT Tellerrand'. Below the headline, it says 'Mit Markus Egger' and '4. Juni 2024 - Kunsthaus Nexus Saalfelden'. The right sidebar contains sections: 'Simple text', 'Überblick', 'Chancen und Potenziale', 'Voraussetzungen', 'KI im Alltag', and 'Termin und Anmeldung'. At the bottom, there are social media share buttons and a footer with 'State of AI - Saalfelden (free...)' and 'EIN BLICK ÜBER DEN ChatGPT Tellerrand'.

Homeowner's Associations



Community Notes

Client: CCRCA - Cross Creek Ranch C.A.

Section: - All - Search:

Show: ☒ Active ☐ Inactive ☐ All

Active	Comcode	Section	Headline	View	Expiration	Last Change	By
✓	CCRCA	* New Flashes	*** Newflash - Access Device Deactivation		12/31/24	08/31/22	Gattis_K
✓	CCRCA	* New Flashes	***News Flash*** Beacon Cove Trail - Incorrect in USPS Database		08/31/23	07/20/23	GonzalezJ
✓	CCRCA	* New Flashes	***NewsFlash*** 2023 Pool Season		01/01/24	04/28/23	GonzalezJ
✓	CCRCA	* New Flashes	***NewsFlash*** Camp Flewellen Access Under Maintenance		10/31/23	07/21/23	GonzalezJ
✓	CCRCA	* New Flashes	***NewsFlash*** Cross Creek West (CCW) Trash Service		01/01/24	01/18/23	Moore1
✓	CCRCA	* New Flashes	***NewsFlash*** Delay Long Grass Cutbacks		08/31/23	06/07/23	GonzalezJ
✓	CCRCA	* New Flashes	***NewsFlash*** Fountain Issues		01/01/24	07/27/23	GonzalezJ
✓	CCRCA	* New Flashes	***NewsFlash*** Lake Dye		01/01/25	06/21/23	GonzalezJ
✓	CCRCA	* New Flashes	***NewsFlash*** Lakes of Cross Creek Fountain		12/31/23	06/26/23	GonzalezJ
✓	CCRCA	* New Flashes	***NewsFlash*** Mosquito Complaints **Update**		12/01/23	05/30/23	GonzalezJ
✓	CCRCA	* New Flashes	***NewsFlash*** Swallow Nests Spotted in CCRCA		09/30/23	07/14/23	GonzalezJ
✓	CCRCA	* New Flashes	***NewsFlash***Pine Park and Adventure Island Drinking Fountains Under Maintenance		09/30/23	07/21/23	GonzalezJ
✓	CCRCA	* New Flashes	**NewsFlash*** Bacteria Found Within BCCRCA		09/30/23	07/18/23	Reyes
✓	CCRCA	* New Flashes	Lakes of Cross Creek Ranch - gate damaged		08/05/23	07/05/23	Reyes
✓	CCRCA	Access	Access - Amenity Access - How to Obtain Amenity Access		04/11/23	GonzalezJ	
✓	CCRCA	Access	Access - Amenity Access - Mobile Credentials One-Time Free Replacement		04/11/23	GonzalezJ	
✓	CCRCA	Access	Access - Amenity Access - New Amenity System FAQ		04/11/23	GonzalezJ	
✓	CCRCA	Access	Access - Amenity Access - Processing Time		04/11/23	GonzalezJ	
✓	CCRCA	Access	Access - Amenity Access - Reactivation Request		04/11/23	GonzalezJ	
✓	CCRCA	Access	Access - Amenity Access - Troubleshooting - Devices		04/11/23	GonzalezJ	
✓	CCRCA	Access	Access - Gated Service Area - Access		04/11/23	GonzalezJ	
✓	CCRCA	Access	Access - Gated Service Area - Gate Entry Issues (EZ Tag/Code)		04/11/23	GonzalezJ	
✓	CCRCA	Access	Amenity Access Devices - Temporary Pass		06/30/23	GonzalezJ	
✓	CCRCA	Access	Gate Access - Emergency Number		04/11/23	GonzalezJ	

Searching for: pool schedule

The pool season is from May 1-September 30 in 2023. Schedules for each month are released in the My CCR App month prior or sooner. The schedule can be accessed in the CCR App. Flewellen Creek Pool has a maximum capacity of 100 people and is open to all residents. Adventure Island has a long water slide, a resort-style swimming pool with shelves, dedicated lap lanes, and a splash-n-spray play area. Greenthread Park offers a large-scale resort-style pavilion complex with water features and sunbathing area. The park has a pavilion, event lawn, and trails. Rent through A-Beautiful Pools, Inc. Management Company. Greenthread Park Pool was closed temporarily due to renovations. It was also closed for the day of June 2nd to fecal material. Gate repairs were scheduled for the area at Greenthread Park Pool. The pool hours for June were released on May 24, 2023. Labor Day pool hours for Adventure Island 10:00 a.m. - 8:00 p.m., Greenthread 10:00 a.m. - 8:00 p.m., and Flewellen Creek Pool 12:00 p.m.

Source Documents:

NewsFlash 2023 Pool Season

Amenities - Flewellen Creek Pool

Amenities - Splash Pad at Adventure Island

Amenities - Greenthread Park

How to Access Pool Schedule via My CCR App

Amenities - Adventure Island

Greenthread Park Pool Closure

NewsFlash Greenthread Pool Closure 6/29/23

*** NewsFlash - Labor Day Pool Hours

*** NewsFlash - Greenthread Park Pool - Gate repairs***

2023 June & July Swimming Pool Hours

Procedures - Swim Lessons at Flewellen Creek Pool

Suggested Follow-Up Questions:

What are the specific pool schedules for each month?

How can I view the pool schedule?

What are the local pool rules?

What are the maximum capacities for each pool?

Was sind die Öffnungszeiten der Schwimmbäder?

Searching for: pool hours

Die Schwimmbadzeiten variieren je nach Ort. Greenthread Park Pool ist derzeit aufgrund von Renovierungsarbeiten geschlossen. Die vollständigen Öffnungszeiten für Juni und Juli 2023 können im My Cross Creek Ranch-App oder auf der Website unter www.mycrosscreekranch.com eingesehen werden. An Feiertagen wie dem Labor Day gibt es spezielle Öffnungszeiten. Weitere Details zu Öffnungszeiten und Poolvermietungen sind in den entsprechenden Dokumenten zu finden.

Source Documents:

2023 June & July Swimming Pool Hours

*** NewsFlash - Labor Day Pool Hours

Greenthread Park Pool Closure

Amenities - Flewellen Creek Pool

Amenities - Splash Pad at Adventure Island

Suggested Follow-Up Questions:

Welche speziellen Öffnungszeiten gelten an Feiertagen?

Was sind die Öffnungszeiten des Splash Pad im Adventure Island?

Kann der Pool gemietet werden?

Sind Schwimmkurse erhältlich?

Gibt es Beschränkungen bezüglich der Kapazität der Schwimmbäder?

AI-Powered Business Apps



Olympus

People

New ContactLoad MoreExport DataSearch Mode: AIFilter: Starts WithView: ExtendedPrivacy ModeCODE CopilotMore...

AI Query Prompt:

People who created a magazine subscription since the pandemic with a ZIP code indicating they are from the greater Houston area.

Note: AI, just like humans, may produce incorrect results.
[Hide Explanation](#)
[Save AI Query](#)

Explanation:

This query returns the primary key values of people who created a magazine subscription since the pandemic and have a ZIP code indicating they are from the greater Houston area.

Detailed Explanation:

This query retrieves the distinct primary key ('pk_name') values from the 'Names' table, for people who have created a magazine subscription since the pandemic ('n_source = 'magazine_subscription') and

Name	Email Addresses	Phone Numbers	Addresses	Subscr
AK				
AF				
AB				
AB				
ah				
AN				
AM				
AM				
AP				

LLMs und andere KI Modelle



- Vorhersage von Titanic Überlebenden
- Dieses Beispiel braucht mehr als eine KI



**Applikationen ohne
Copilot/AI sind jetzt
„legacy“ (veraltet)!**

Ist KI Gefährlich?



- Die “Singularity”
- Run-Away General Artificial Intelligence
- Was KI **NICHT** ist:
 - Nicht „generell intelligent“
 - Hat kein „Bewusstsein“
 - Ist nicht hinterlistig
 - Versteht Humor nicht
 - Hat keine eigenen Ziele oder Motive
 - Hat keine Gefühle oder Sinn für Schönheit
 - **Ist keine Person!**

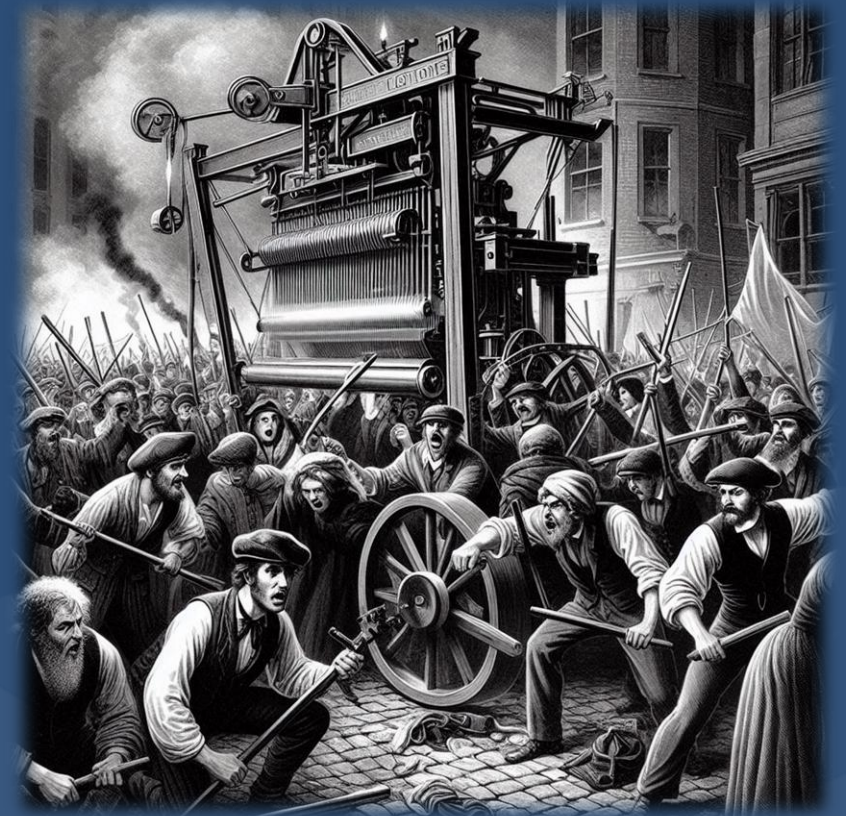
KI und Robotics

- KI und Roboter sollten nicht verwechselt werden
- Wir sind viel weiter mit KI als mit Robotern



KI und die Wirtschaft

- Aktuelle Schätzungen sind sehr unterschiedlich
- Bis 2040-2050, ca. 50-60% aller Jobs können mit KI ersetzt werden
- Der Einfluss auf die Gesellschaft ist auf alle Fälle dramatisch
- Aber: Aktuell werden durch KI eher Arbeitsplätze geschaffen als abgeschafft



KI Faktoren



DATA, DATA, DATA,
DATA, DATA, DATA,...
(FREELY AVAILABLE)



COMPUTE POWER
(CLOUD AND LOCAL)



FUNDING AND
ENTREPRENEURSHIP



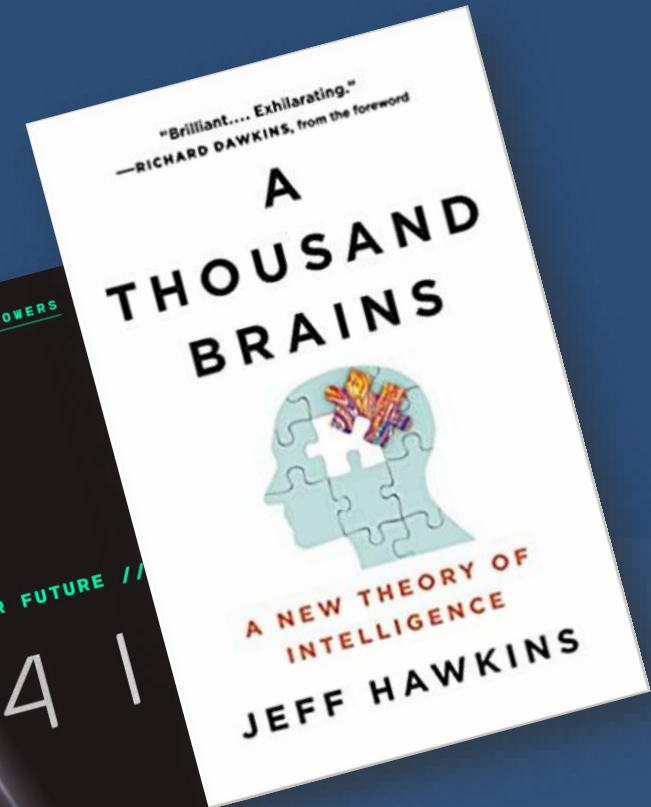
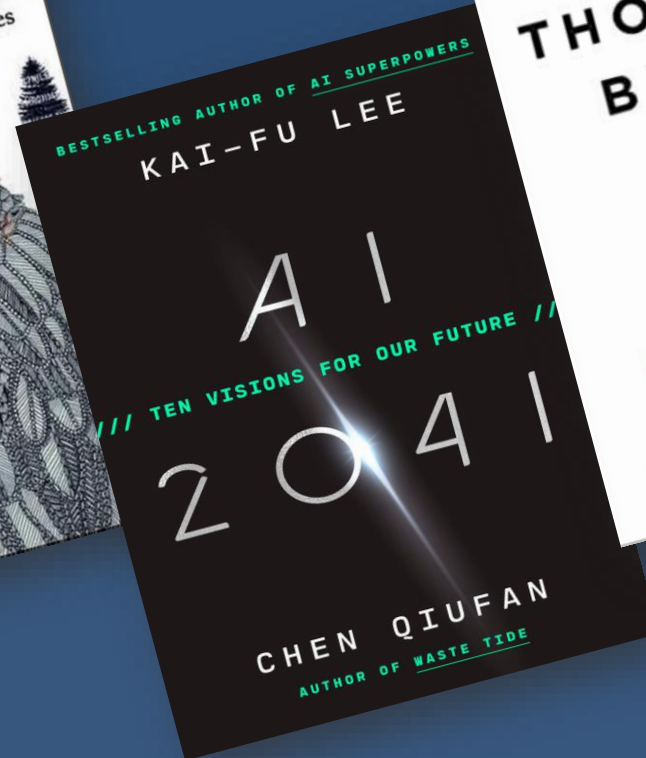
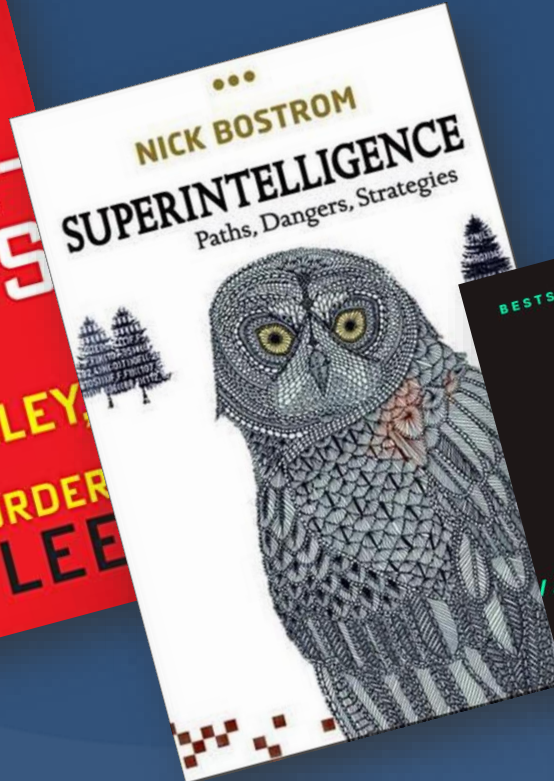
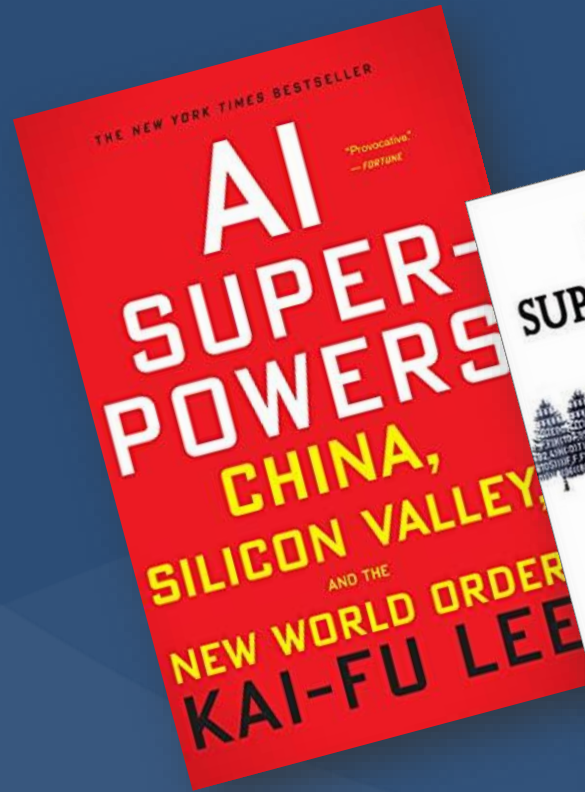
WELL-TRAINED AI
SCIENTISTS

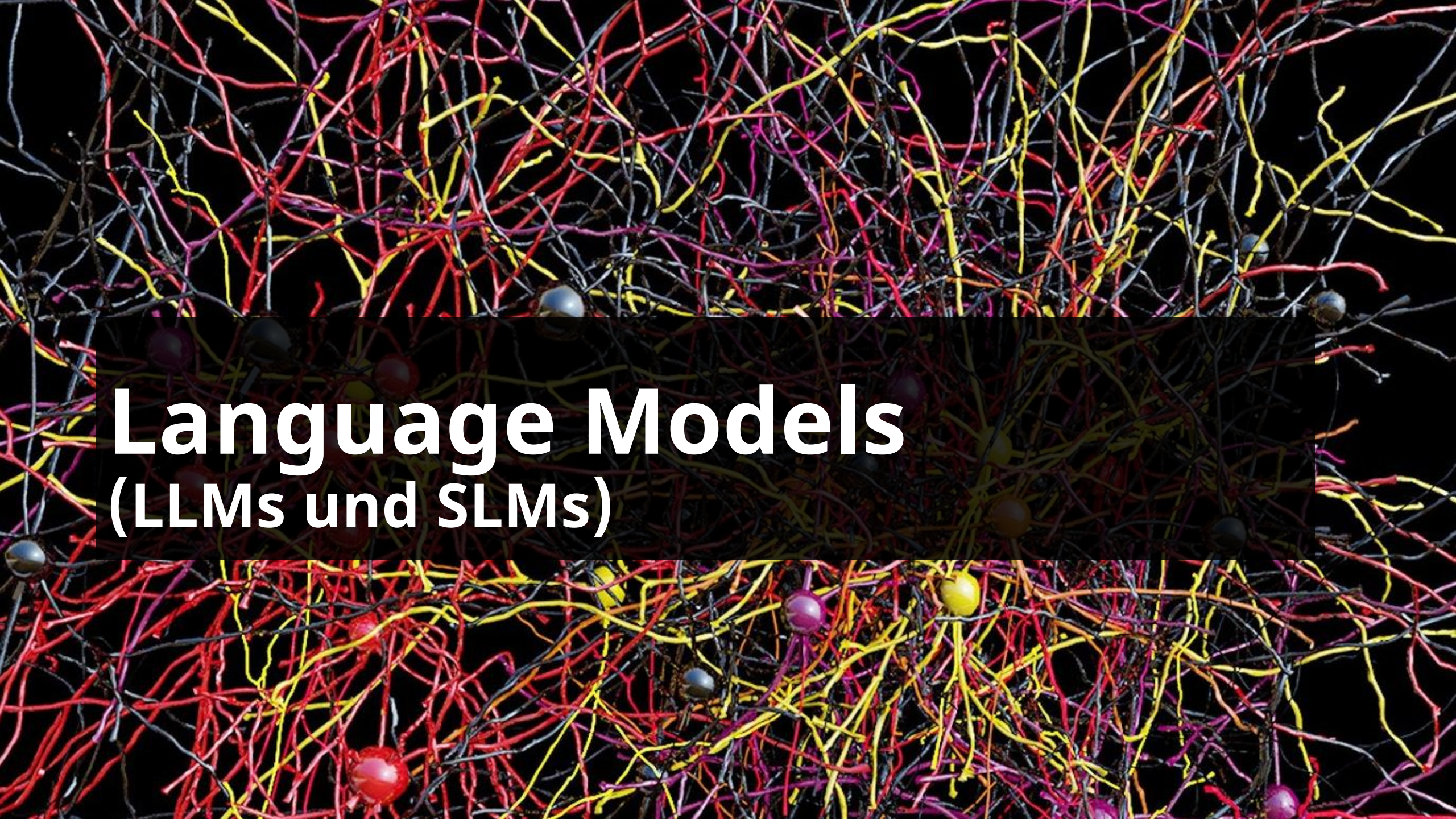


POLITISCHES
UMFELD

Recommended Reading

CODE30
YEARS

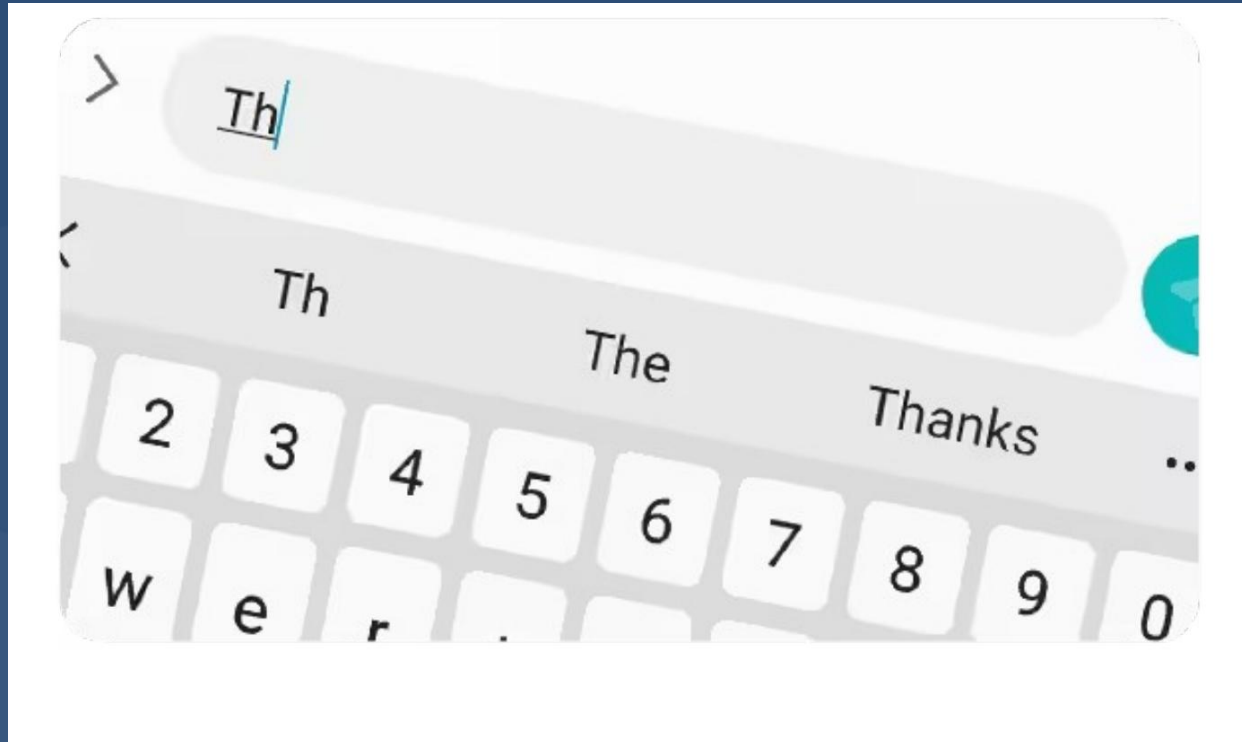




Language Models (LLMs und SLMs)

Large Language Models

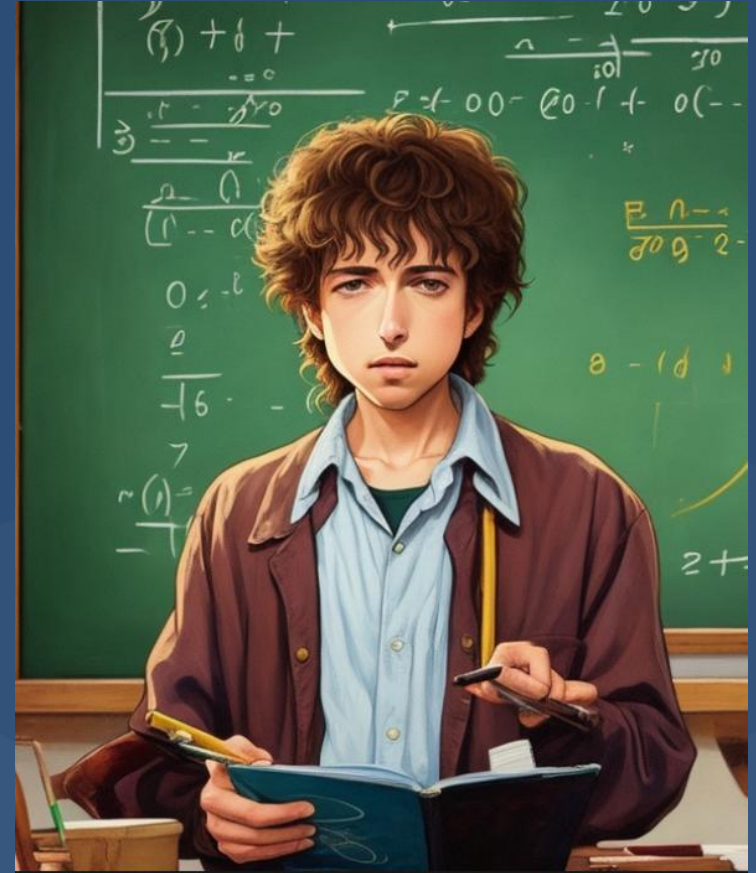
- LLMs based on frequencies



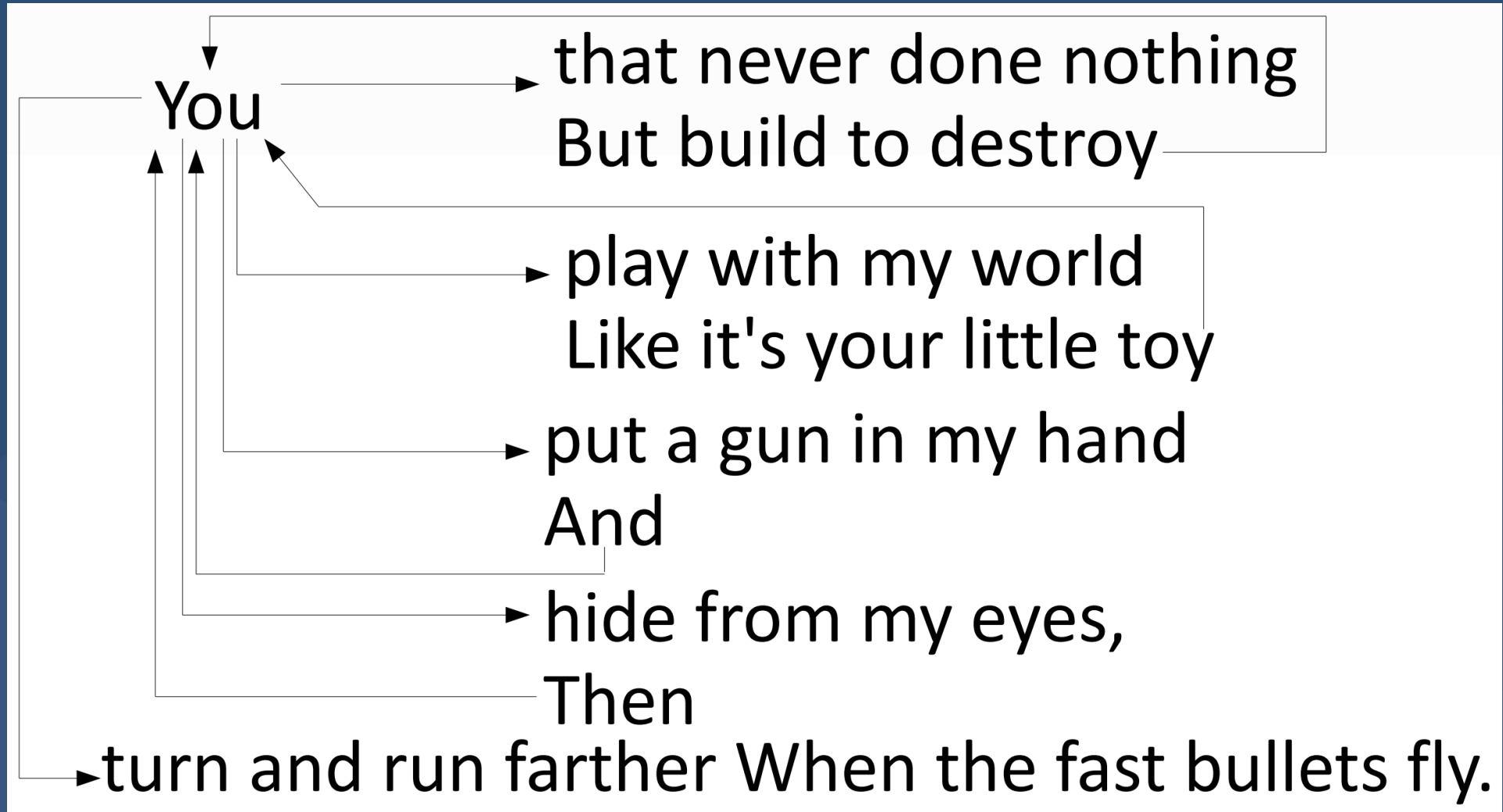
Large Language Models with Bob Dylan



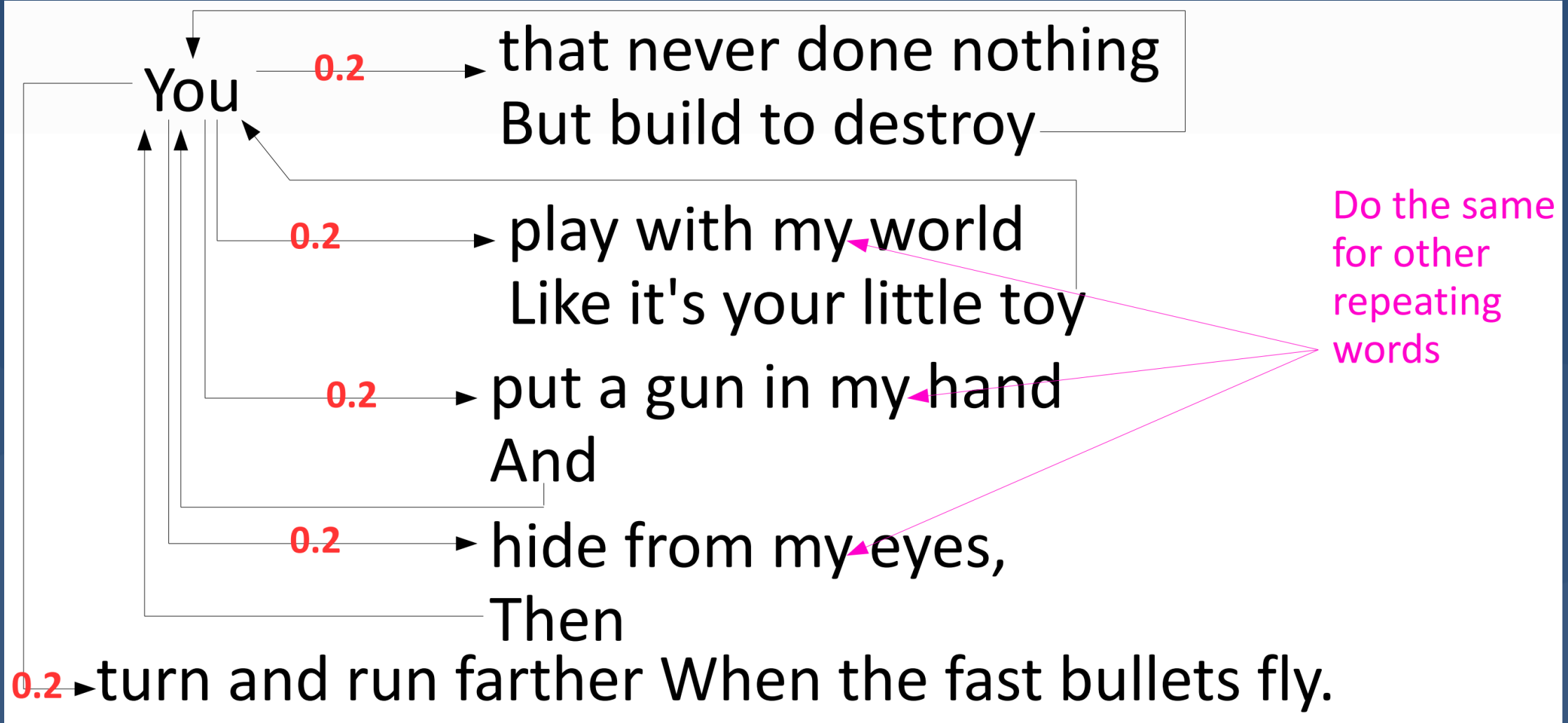
You that never done nothing
But build to destroy,
You play with my world
Like it's your little toy.
You put a gun in my hand
And **you** hide from my eyes,
Then **you** turn and run farther
When the fast bullets fly.



Large Language Models



Large Language Models – Edge Probabilities



Large Language Models as Generative AI

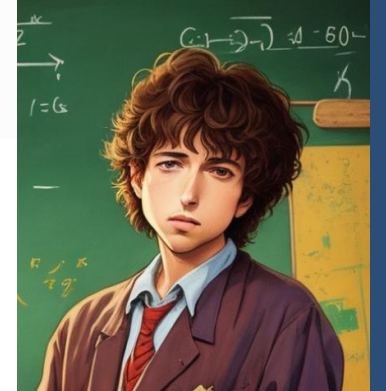


Use this model to generate Bob Dylan songs:

You play with my eyes,
Then you play with my world
Like it's your little toy.
You that never done nothing
But build to destroy,
you hide from my hand
And you hide from my hand
And you hide from my hand
And you hide from my hand
And you hide from my hand
And you hide from my ...etc...

Somewhat ok

Garbage



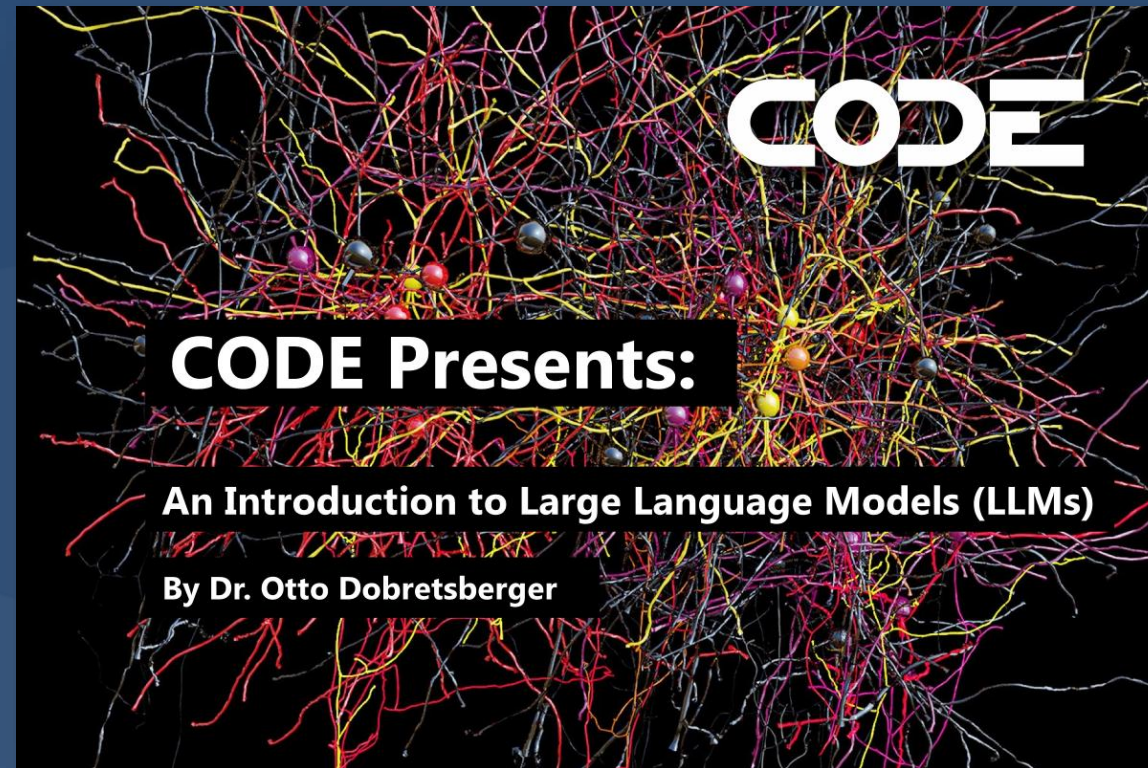
ORIGINAL

~~You that never done nothing
But build to destroy,
You play with my world
Like it's your little toy.
You put a gun in my hand
And you hide from my eyes,
Then you turn and run farther
When the fast bullets fly.~~

How Large Language Models Work



- Gratis Online Vorträge: www.codemag.com/StateOfAI

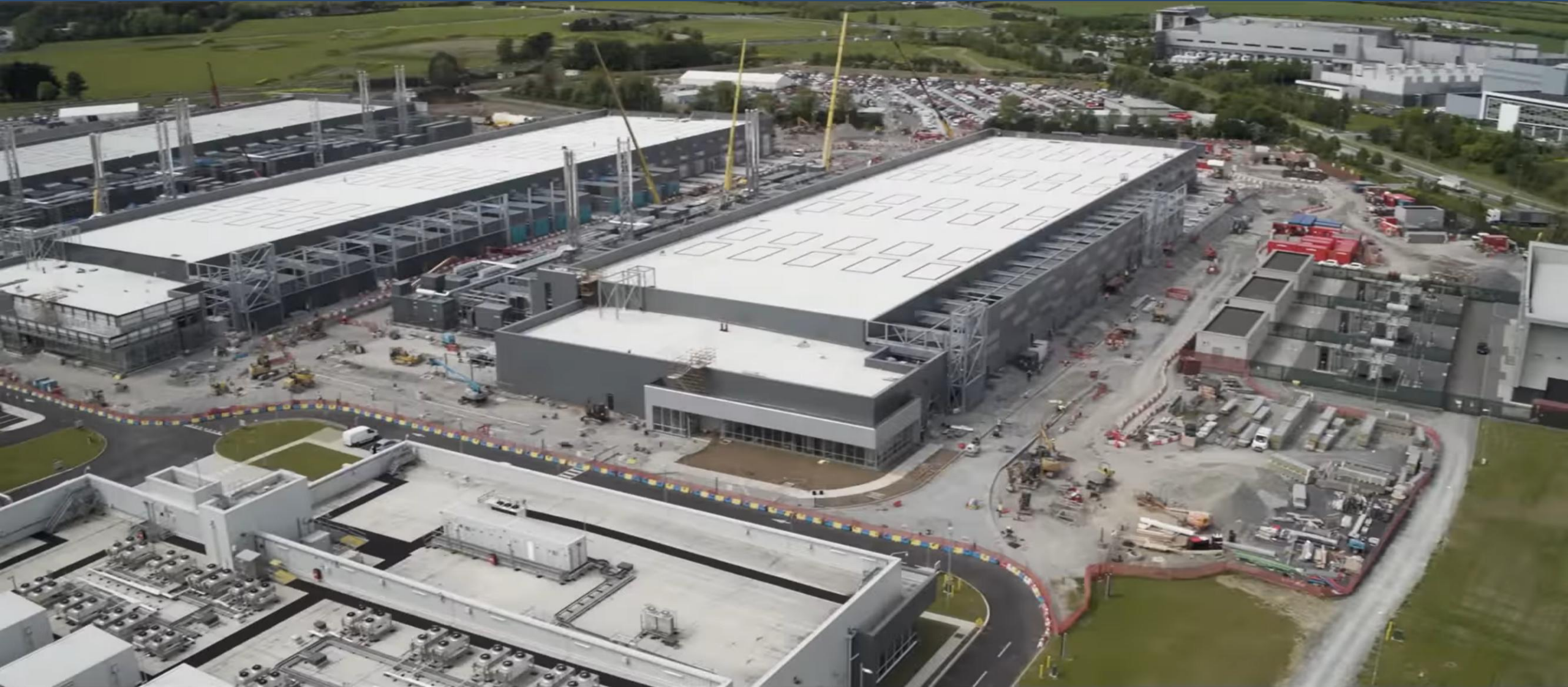




Hardware

Unglaubliche Dimensionen!

CODE 30
YEARS





Copilot + PC

Copilot + PC

- Neue Hardware-Plattform für die neuen Anforderungen der KI („Copilot“)
- Leistungsstarke KI-Hardware und ARM Prozessoren als Basis
- Hardware sowohl von Microsoft als auch Partnern: Acer, ASUS, Dell, HP, Lenovo, und Samsung



Copilot + PC: Surface Laptop



Meine Konfiguration:

- 15" Display
- Snapdragon X Elite 12 Core
- 64GB Ram, 1TB SSD
- 22-hour Batterie
- NPU (45 Trillion Operations/sec)



NPU

- Neural Processing Unit
- “GPU für KI” ;-)
 - Typischerweise oft kleinere, aber mehr parallele und zahlreichere Rechnungsschritte mit niedrigerer Präzision als GPUs
- Spezielle Hardware für KI
- Die nächste Generation von Computern hat NPUs

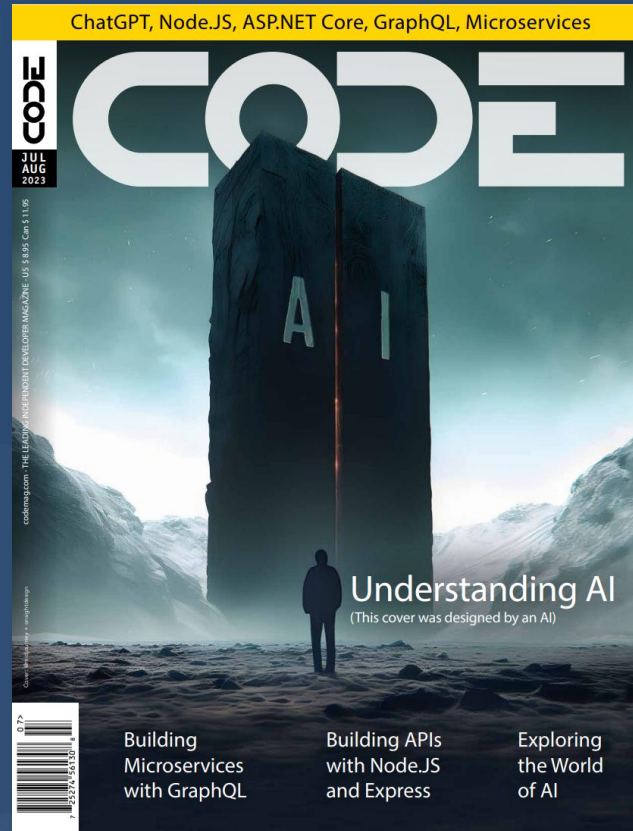
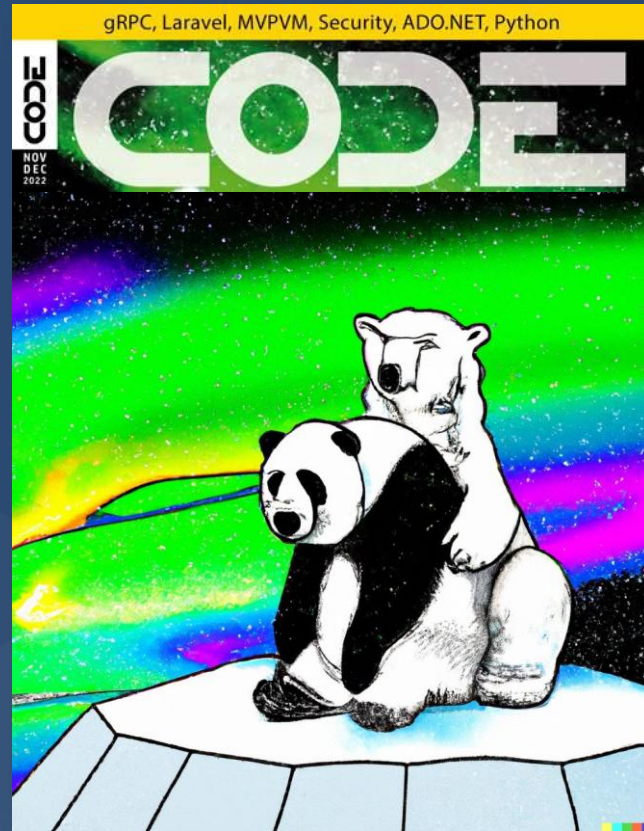




Image Generation

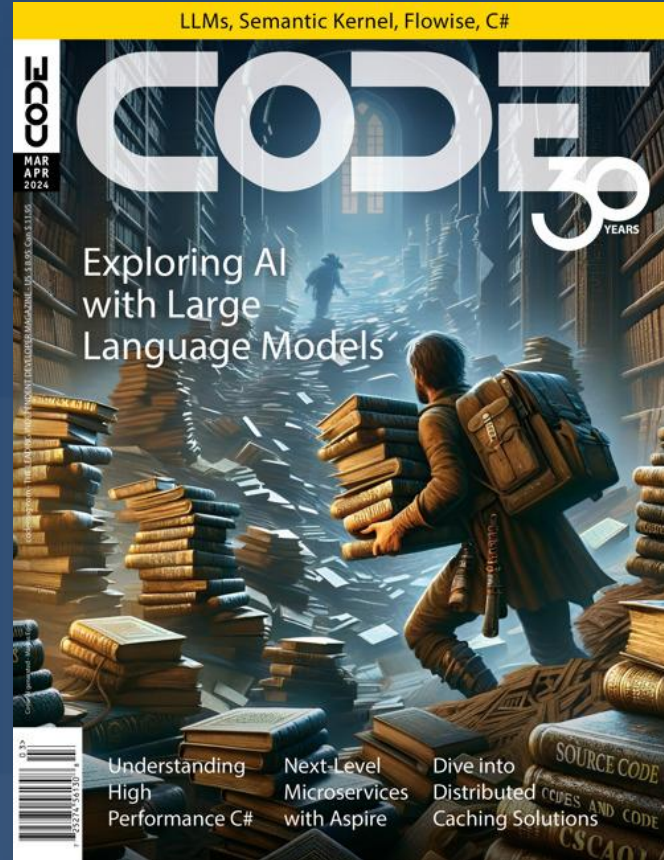
OpenAI – DALL-E 2

CODE30
YEARS



DALL-E 3

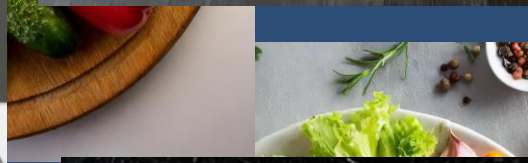
CODE30
YEARS



OpenAI - Sora



- Sora ist ein Video-Generator von OpenAI
- www.OpenAI.com/Sora



AI-Powered Content Creation



CODE Image Picker

Image Generation Prompt:

☆ Suggest Prompt

Create an image that represents the concept of preparing for Azure migration using Azure Migrate Application and Code Assessment. The image should have a futuristic art style, inspired by Blade Runner and The Matrix. It could feature a spaceship-like structure hovering in the clouds, symbolizing the migration to Azure. The structure should have a bridge-like design, representing the connection between on-premises and the cloud. Additionally, there could be puzzle pieces scattered around, symbolizing the assessment and re-platforming process. The overall image should be calm and non-cluttered, with bold colors and design. Instruct DALL-E to avoid using letters and numbers, unless necessary for the concept. Let creativity flow! - Possible Art Style(s): Futuristic. Possibly useful inspirations: Cloud architecture, Azure portal. Possibly useful metaphors: Spaceship, bridge, puzzle pieces. Possibly useful pop-culture references: Blade Runner, The Matrix. Possibly useful visual ideas that could be included: Clouds, futuristic buildings, server racks.

Image Preview:






Image Information: AIGeneratedImage.png



Original Prompt:

Create an image that represents the concept of preparing for Azure migration using Azure Migrate Application and Code Assessment. The image should have a futuristic art style, inspired by Blade Runner and The Matrix. It could feature a spaceship-like structure hovering in the clouds, symbolizing the migration to Azure. The structure should have a bridge-like design, representing the connection between on-premises and the cloud. Additionally, there could be puzzle pieces scattered around, symbolizing the assessment and re-platforming process. The overall image should be calm and non-cluttered, with bold colors and design. Instruct DALL-E to avoid using letters and numbers, unless necessary for the concept. Let creativity flow! - Possible Art Style(s): Futuristic. Possibly useful inspirations: Cloud architecture, Azure portal. Possibly useful metaphors: Spaceship, bridge, puzzle pieces. Possibly useful pop-culture references: Blade Runner, The Matrix. Possibly useful visual ideas that could be included: Clouds, futuristic buildings, server racks.

Image Description (revised prompt provided by AI):

Create a futuristic image inspired by concepts from science fiction films, focusing on the theme of migration to cloud technology using Azure Migrate Application and Code Assessment. Feature a spaceship-like structure hovering amidst the clouds, showcasing a bold palette of colors and a clean, non-cluttered aesthetic. The image should depict a bridge-like design connecting the structure and the ground below, symbolizing the connection between on-premises technology and the cloud. Scattered around should be puzzle pieces, illustrating the process of assessment and re-platforming. The visual narrative should be calm and smooth, devoid of letters and numbers unless entirely necessary for the concept, promoting an atmosphere of imaginative creativity.

Image Name:

AIGeneratedImage.png

Save Image as File...





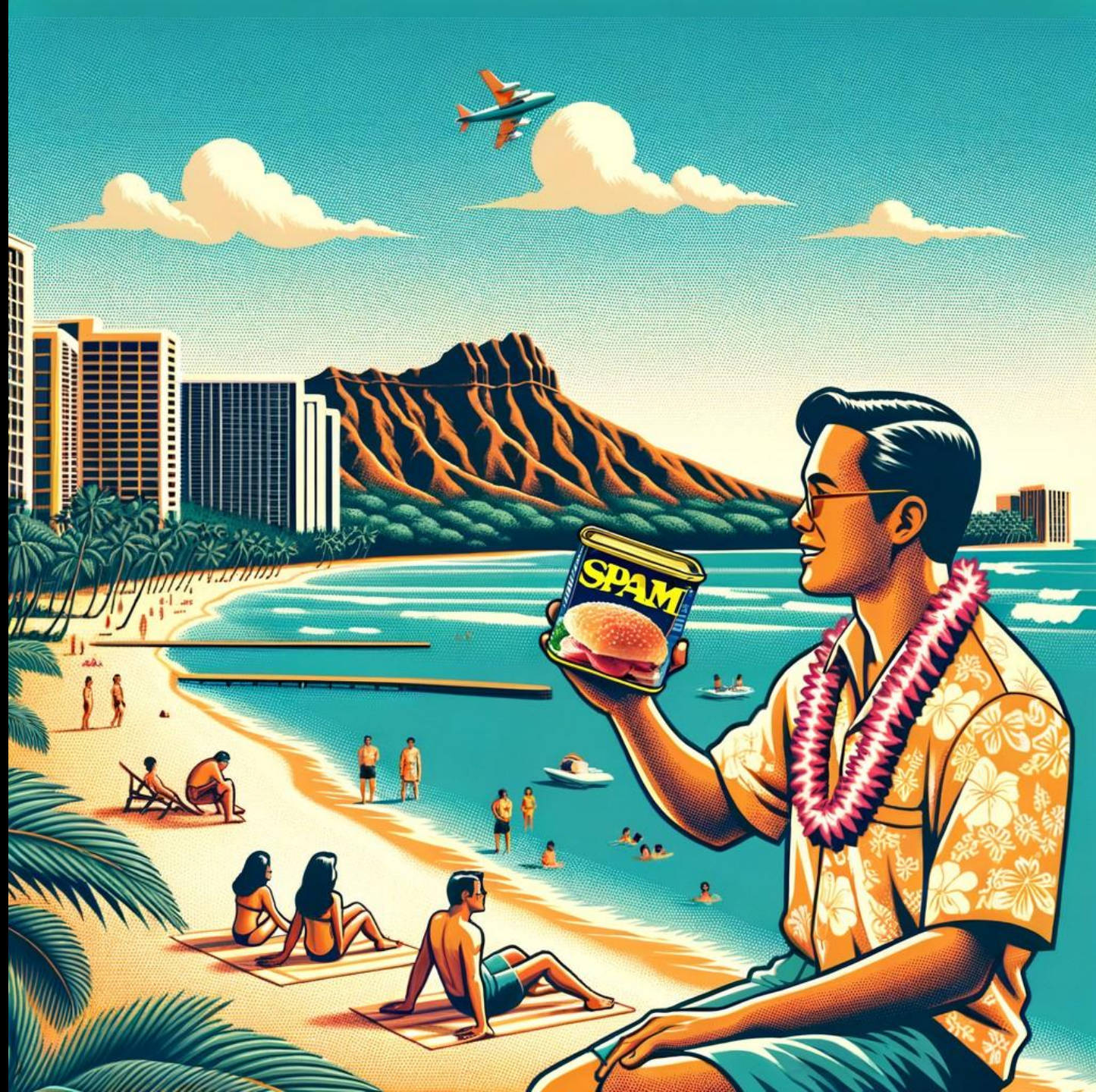




















CODE30
YEARS

& A

s Egger

demag.com

emag.com

emag.com